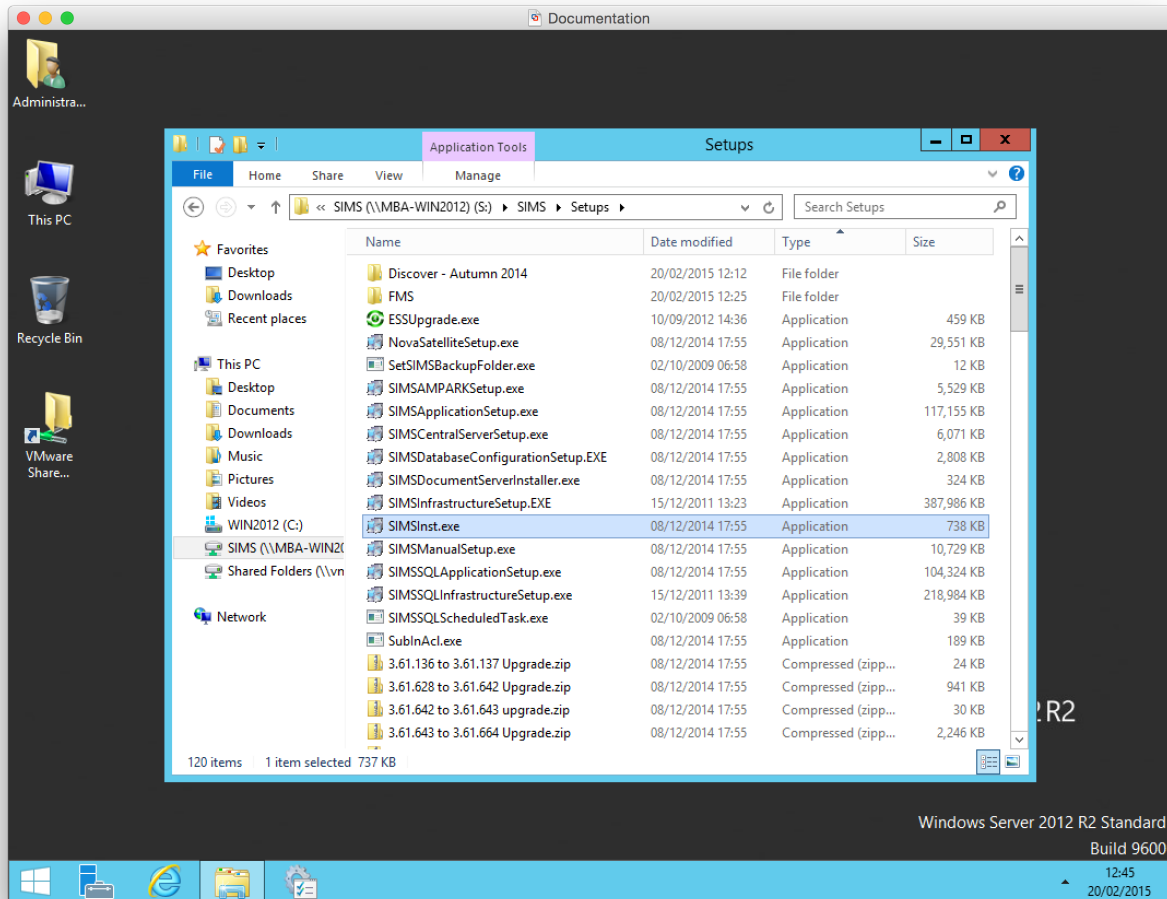


SIMS Workstation Installation

There are two methods of installing the SIMS workstation software onto a client PC. There is an automated version and a manual version. This document will outline the steps to be taken to use either method. Please note that it is always recommended to use the automated version where possible, this will help to minimise any potential problems from missing installed elements.

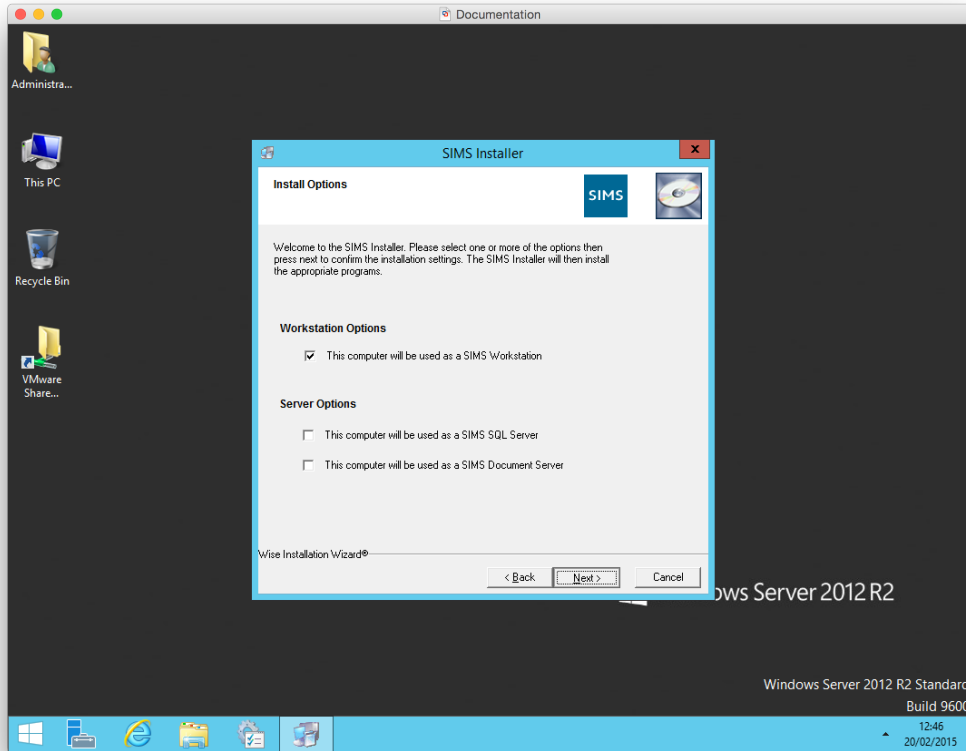
Automated Installation:

Locate the SIMS installation file SIMSInst.exe within the "Setups" folder on your SIMS Server.

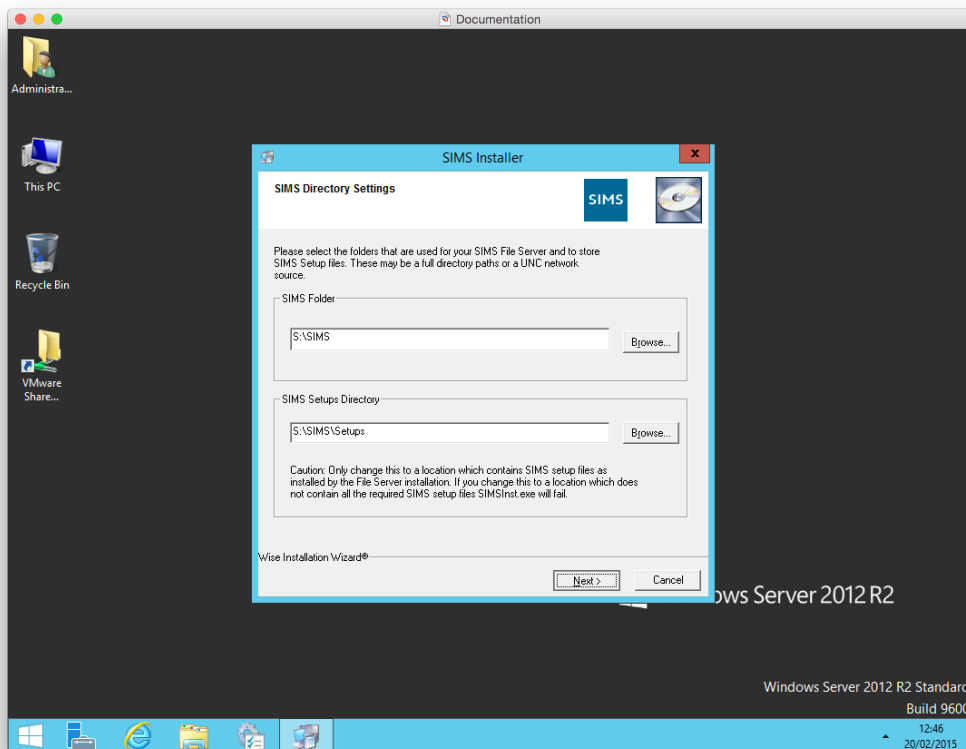


SIMS Workstation Install

By double clicking on this file and clicking “Next” in the first window you will be presented with the “Install Options” windows below. As shown in the picture, please select the “Workstations Options” check box only and then click Next.

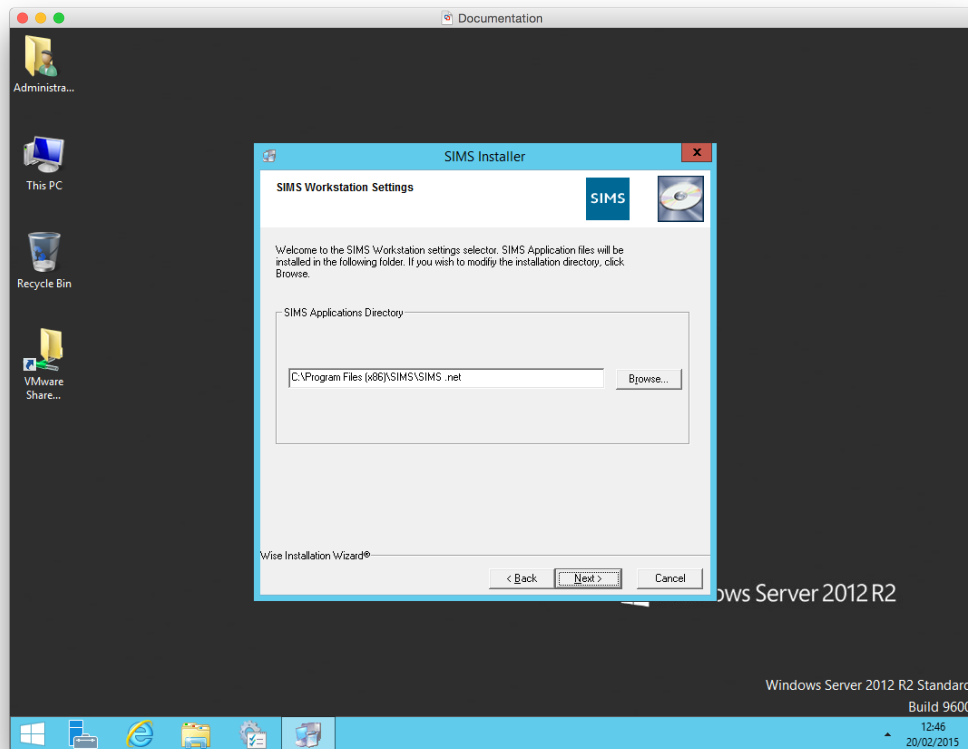


On the “SIMS Directory Settings” window shown below, please select the paths to both the shared SIMS directory on your SIMS server and also the Setups folder located within it. Please note that you cannot write the paths into the boxes and click next, you must use the “Browse” button.

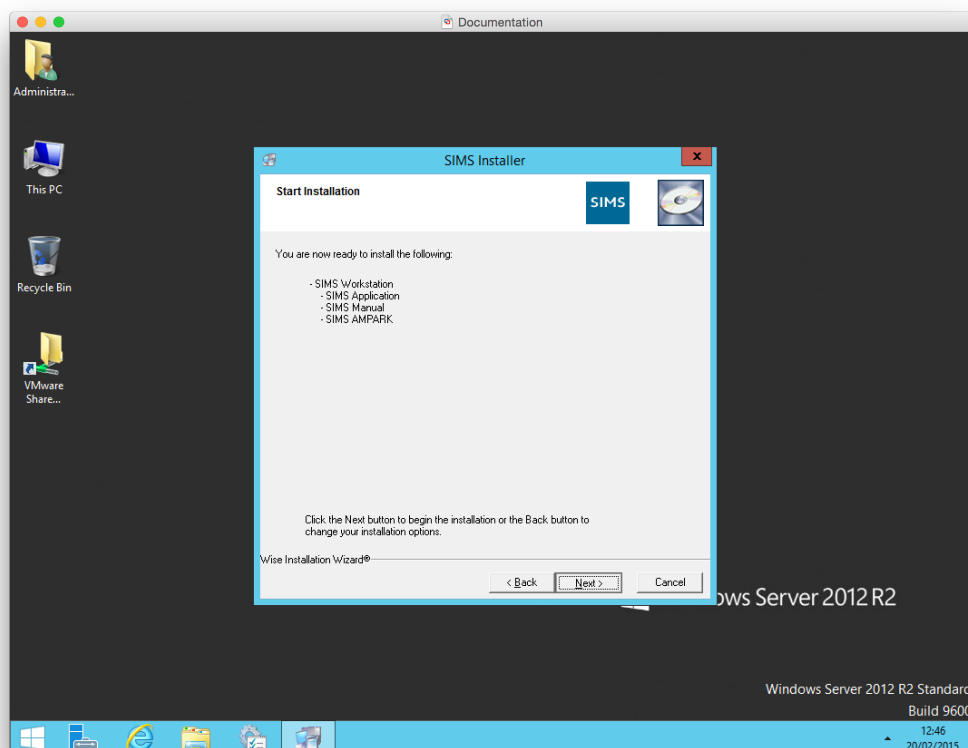


SIMS Workstation Install

You will now be shown the “SIMS Workstation Settings” page. This page details the path that will be used for the SIMS client install files. On a 64 Bit operating system the install path will default to the one shown in the following picture. When you have selected your path, click the “Next” button.

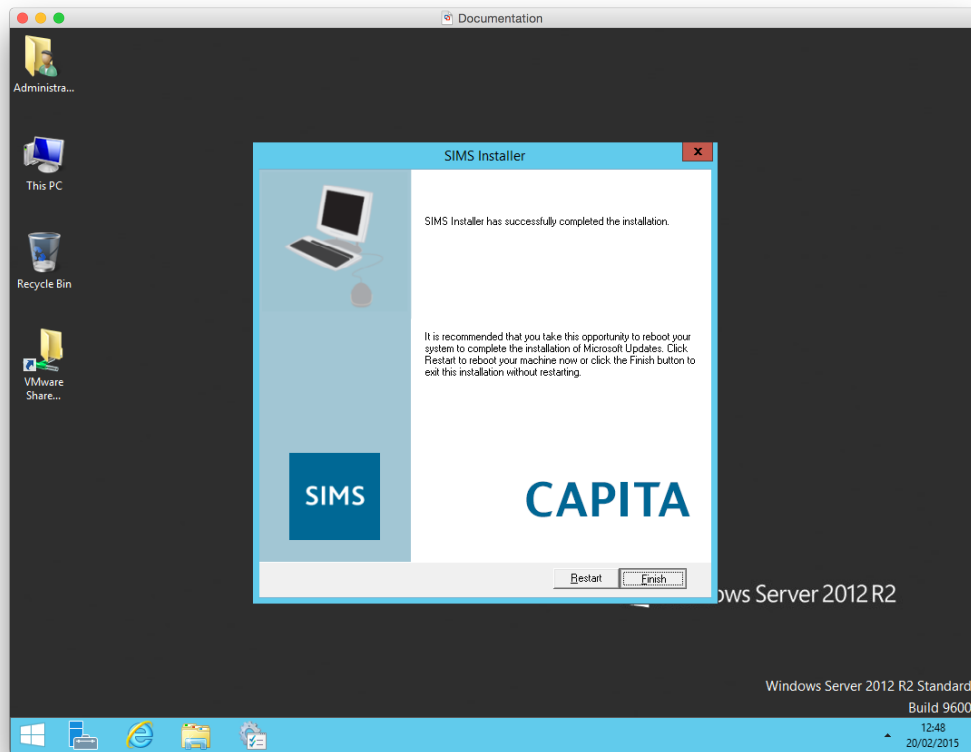


You will now see the “SIMS Installation” window, this windows shows a summary of the software that will be installed on the client PC. When you are ready to proceed, click the “Next” button to begin the installation process.

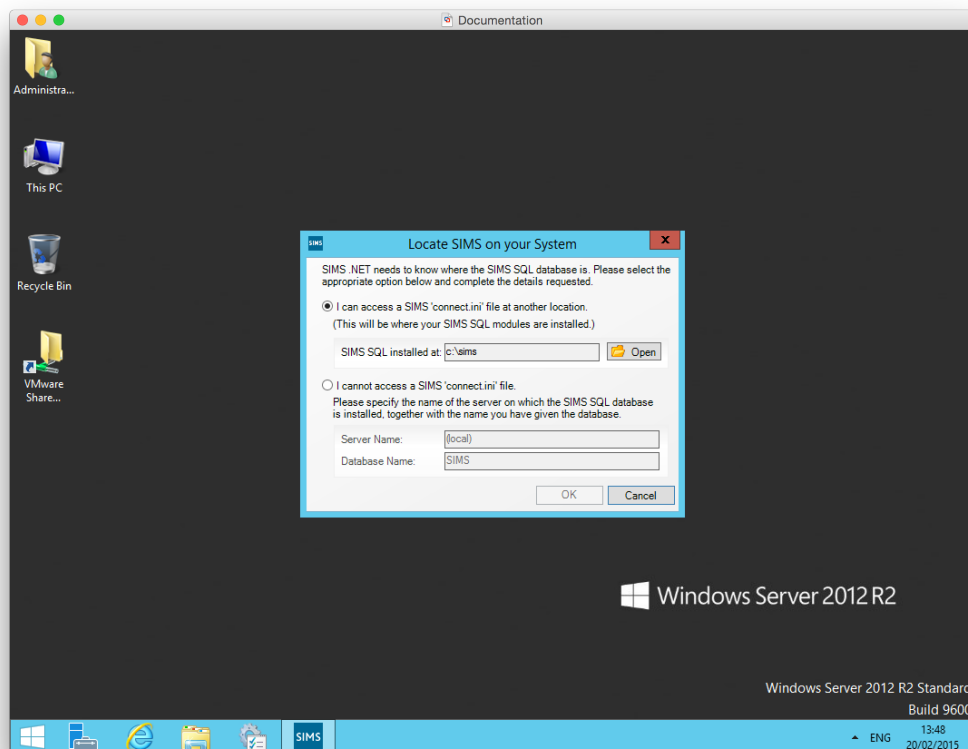


SIMS Workstation Install

Once the install process has completed, you will see the “SIMS Installer” window. It is recommended that you click on the “Restart” button and allow the machine to restart before using SIMS for the first time, but it is not compulsory.



Once you start SIMS for the first time, you will see the following screen as the software cannot locate a valid “Connect.ini” file within its installation directory. If you know the location of a valid Connect.ini, you can use the browse button and select it. This will create a redirection in the local file.



SIMS Workstation Install

If you do not know the path to a Connect.ini, or you do not have one located anywhere else, you can specify the settings for the SIMS server. In the example below you must follow the format “SIMS Server Name\SQL Instance Name” and then the name of the SIMS database.

